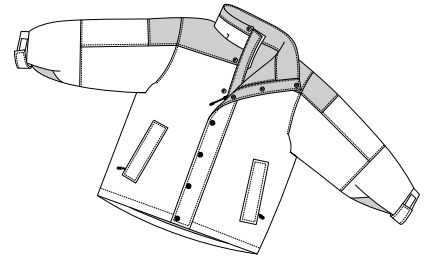
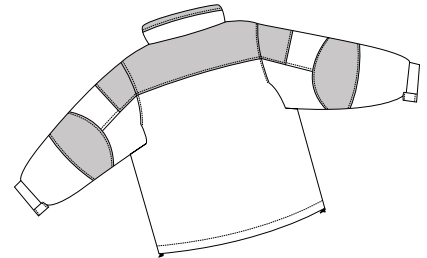


Waterproof Adventure Jacket

PORT AUTHORITY®
SIGNATURE



Front



Back

J778

- * 100% M-Tek™ nylon shell
- * Seams sealed for waterproof protection
- * Zip and snap storm flap
- * Locker loop
- * Slash pockets with protective flaps and zippered closures
- * Zip in the J776 reversible Down Jacket

Care Instructions:

Machine wash cold with like colors. Line dry. Do not dry clean. Do not bleach. Do not iron. Tumble dry low.

Finished Measurements in Inches

Size	XS	S	M	L	XL	2XL	3XL	4XL
Chest	22	24	25.5	27	28.5	30	31.5	33
Length	28	28.5	29	30	31	32	32.5	33
Sleeve	32	34	36	37	38	38.5	39	39.5
Collar	4	4	4	4	4	4	4	4
Areas for Decoration	Left Chest, Back		Port Pocket™			L Underarm, Back Lining		

Collar measured center back seam to top hem. Chest width measured 1" below arm hole.
Body length measured from back neck seam to hem. Sleeve length measured from center back seam to hem.

Colors

	Black/Black
	Red/Black
	Royal/Black

Please Note:

Colors shown are approximate and for reference only. For closest match see PMS colors, or for exact match, returnable samples and grommets samples are available.

Color Chart

Jacket Color	Black	Red	Royal
Textile PMS	19-4005TC	19-1656TC	19-4057TC
General PMS	426C	202C	647C
Trim Color	Black		
Textile PMS	19-4005TC		
General PMS	426C		